

May is Labor History Month!



Exhibitions:



Tenement Museum

103 Orchard St, NYC 10002

Mon – Sun 10 – 6 pm

A Union of Hope: 1869 (new apartment tour)

Meet Joseph & Rachel Moore, Black NYers who made their home in Lower Manhattan tenements in the 1860s & 1870s, living with Irish & African American NYers in a rear tenement in today's SoHo neighborhood. Trace Joseph's history from his free Black community of Belvidere, NJ, his family's migration to NYC -- & the community he & his wife Rachel built in their neighborhoods & workplaces.

Admission: \$30. (877) 975-3786. www.tenement.org



Buffalo AFL-CIO Council membership cards from 1953-2010, The Richard Lipsitz Jr. Collection on Labor Organizing in Western NY.

University of Buffalo Libraries

433 Capen Hall, Buffalo, NY 14260-1625

United We Bargain

Virtual Exhibition: (716) 645-2965. Library.buffalo.edu/news/2023/01/20/united-we-bargain/



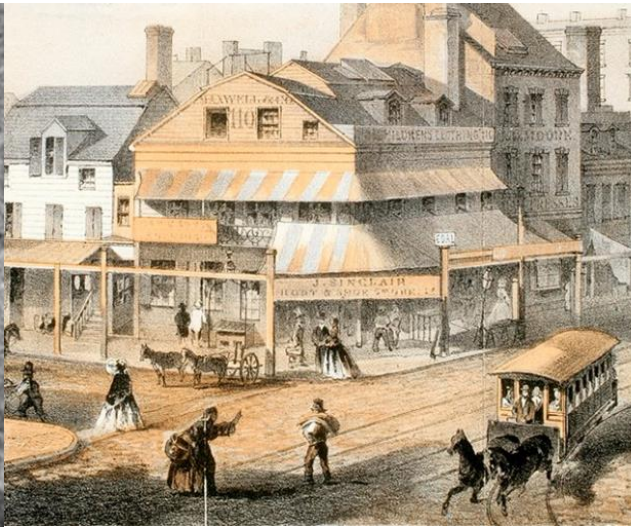
Erie Canal Museum

318 Erie Blvd, East Syracuse, NY 13202

10 – 4 pm daily

Learn the history & construction of the **Erie Canal**, from earliest conception to the modern Barge Canal System. Experience Canal town life. See a Canal-era tavern, general store & theater. Explore a full-size replica line boat, The Frank Buchanan Thomson, a pre-enlargement vessel that would have carried both cargo & passengers on the Canal. Learn about life for canal boat passengers & crew, as well as the raw materials & finished goods that travelled on the Canal.

Admission: \$10. (315) 471-0593. <https://eriecanalmuseum.org>



Transit Museum

99 Schermerhorn St. (a decommissioned subway station)

Brooklyn, NY 11201

Mon – Fri 10 – 5; Sat – Sun 10 - 6

100 years before Rosa Parks, Elizabeth Jennings Graham refused to give up her seat on a streetcar.

Virtual Exhibition: nytransitmuseum.org/elizabethjenningsgraham

Steel, Stone & Backbone presents the construction methods & labor required to build NYC's first subway line, 1900-1904.

Moving the Millions highlights the evolution of the subway & the major issues & events that influenced the development of the largest transportation network in North America.

Admission: \$10; \$5 62+, Ages 2-17. nytransitmuseum.org

Museum of the City of New York

1250 5th Av @E103rd St, NYC 10029

Mon – Fri 10 – 5; Sat – Sun 10 – 6



Thomas J. O'Halloran, "Congresswoman Shirley Chisholm announcing her candidacy for the presidential nomination" (l-r) Chisholm, Charles B. Rangel, Parren Mitchell, Bella Abzug, January 25, 1972, Library of Congress, LC-U9-25384- 7B, [http](http://www.loc.gov)

Changing the Face of Democracy: Shirley Chisholm at 100

Through July 20

Life & legacy of the 1st Black woman elected to Congress. Amid the larger landscape of NY politics, Caribbean communities, & Black women's activism, follow Chisholm's early years in Brooklyn & Barbados, 1964 election to the NYS legislature, 1968 election to Congress, & 1972 run for President.

Admission: \$23; \$18 65+ w/ID; \$14 Students 19+ w/ID; Under 19 free. (917) 492-3333. mcny.org



Through July 20

Lee Quiñones, *Breakfast at Baychester*, c. 1980. MCNY Martin Wong Collection (94.114.176)

NY's age of graffiti, consciously artistic despite its unsanctioned origins, began on city streets in the early 1970s. Exhibition showcases artists' transition from illegally tagging subway cars – to creating paintings on canvas & exhibiting in galleries & museums. Artist Martin Wong collected more than 300 paintings by graffiti artists.



Brooklyn Museum

200 Eastern Parkway, Brooklyn, NY 11238-6052.

Wed – Sun 11 am – 6 pm

Consuelo Kanaga: Catch the Spirit

Through August 3

For 60 years, **Consuelo Kanaga** (American, 1894-1978) used her camera to confront urgent social issues of her time, from urban poverty to labor rights to racial terror & inequality. Exhibition charts the artist's groundbreaking work & life story. (718) 638-5000.

Admission: \$20; \$14 65+, disabled, caregiver, students (20+); under 19 free. brooklynmuseum.org

The New York Historical Society

170 Central Park West @77th St, NYC 10024

Tu, Wed, Thurs, Sat, Sun 11 - 5 pm; Fri 11 - 8 pm



Real Clothes, Real Lives 200 Years of What Women Wore

Through June 22

Exhibition: (from the Smith College Historic Clothing Collection) examines everyday clothing of ordinary women, from hard-worn house dresses to psychedelic micro minis & modern suits to fast-food workers' uniforms. Exhibition traces how women's roles have changed & evolved dramatically over the decades across the spectrum of race & class. **Meet the Curator: May 2**

Admission: \$24; \$19 Srs, Educators, Active Military; **\$13** Students; **\$6** Age 5–13) Under 5 free; **Pay-as-you-wish** 5 - 8 pm Fridays, **12 noon**. 212-873-3400. www.nyhistory.org



Fred W. McDarrah: Pride and Protest

Exhibition: 60 black-&-white photographs by famed *Village Voice* photographer Fred McDarrah depict triumphs & struggles in the history of the LGBTQ+ civil rights movement: Mattachine Society's 1966 "Sip-In" at Julius' Bar, the 1969 Stonewall Uprising, AIDS marches, & City Hall ACT UP protests.



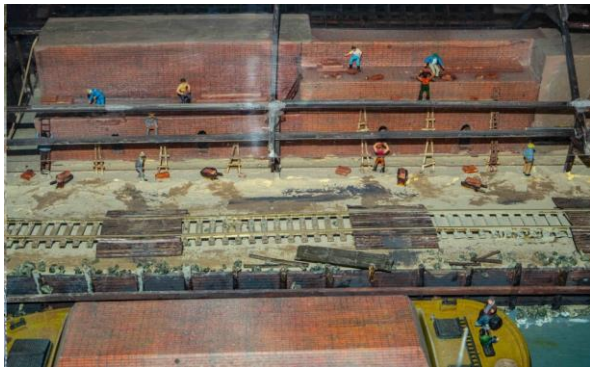
We Rise

Film: Narrated by Meryl Streep, features the by Alicia Keys song "We Are Here." **We Rise** places women at the center of political thought & action that reshaped the country in the early 20th century. 17-minute film profiles remarkable women whose advocacy for change had lasting effects -- including Lillian Wald, nurse/founder of Henry St. Settlement; Addie Hunton, suffragist leader of black women's

organizations; Margaret Sanger, birth control activist; Clara Lemlich, who led the 1909 strike of NY shirtwaist workers; & Clara Driscoll, head of Tiffany Studios' Women's Glass Cutting Department.

New York Story

Film: Narrated by Liev Schreiber. 18-minute theatrical media experience illuminates the story of the nation by exploring New York's rise from a remote outpost to a city at the center of the world.



Haverstraw Brick Museum

12 Main Street, Haverstraw, NY 10927

Sat & Sun 1 – 4 pm; open by appointment Tues - Fri

The Brickyards

Details the history of Haverstraw brickyards & the brick industry that supported towns & villages along the Hudson River from the 1600s to the 1940s with handmade dioramas about the brick industry.

Suggested Donation: \$6. (845) 947-3505. info@haverstrawbrickmuseum.org



Municipal Workers Organize, 1954

New York City Works: Jobs, Advocacy, Action

Labor Arts Central Labor Council virtual exhibition

<https://www.laborarts.org/exhibits/clc/>

The New York City Labor Council embodies the long history of workers & labor unions that makes the city truly a "union town." Creating a photo exhibit for the walls of the CLC's bright new office on W31st St. was an exciting challenge. Even in today's social media age, it was very difficult to find photos of workers on the job. Photos of rallies & strikes, union meetings & leaders -- are plentiful. Our goal was to highlight images of work & the underappreciated cultural heritage of our Labor Movement. We are indebted to the photojournalists who have devoted their lives to chronicling working NYers.

Schedule a viewing of the exhibit at 350 W31st St, NYC 10001 by emailing info@NYCCLC.org



photo: *Generations 2* by David Greene

American Labor Museum Botto House National Landmark,

83 Norwood St, Haledon, NJ 07508.

Wed - Sat, 1 - 4 pm & by appointment

Ordinary People During Extraordinary Times

Exhibit by David Greene

May 1 - August 23

Contemporary photographer David Greene's documentary work provides a view of the social, cultural & personal experiences of the lives of the "ordinary people" who are his subjects. These black-and-white photographs focus on storytelling by a photographer who excels in portraiture.

Admission: \$10. (973) 595-7953. labormuseum@aol.com



Waterfront Museum

290 Conover St, Brooklyn, NY 11231.

Thurs 4 – 8 pm; Sat 1–5 pm

Longshoremen

The freight carried on the Lehigh Valley Number 79 barge was moved on & off the barge by waterfront workers including longshoremen & casual laborers sometimes referred to as chenangoes. Museum collection includes tools used by longshoremen including hooks & chain pullers. Museum collects oral histories from the remaining longshoremen who handled freight before containerization.

Barge Families

Barges like the Lehigh Valley Number 79 had captains who lived aboard with their families, typically in a cabin on the roof. Museum has artifacts & oral histories of these barge families & continues to seek barge family descendants.

Admission: Free. \$9 for a one-hour tour, talk & show. (718) 624-4719. <https://waterfrontmuseum.org>



Newark Public Library,

5 Washington St, Newark, NJ 07102

Mon, Fri, Sat 9 – 5:30 pm; Tues, Wed, Thurs 9 – 8:30 pm

55 Years of Service: The Ironbound Corporation.

Through December 31

The Ironbound Community Corporation (ICC) was established in 1969 to work for the interests of neighborhood residents. In 55 years, it has evolved into one of Newark's most respected institutions, realizing its mission to "engage and empower individuals, families, & groups in realizing their aspirations and, together, work to create a just, vibrant and sustainable community." Photos, correspondence, fliers, & maps for the exhibition were saved by longtime employee Nancy Zak, who curated the exhibit with Tom Ankner & Beth Zak-Cohe.

Admission: Free. (973) 733-7779. <https://www.npl.org/icc55years/>



Hanford Mills Museum

51 County Highway 12, East Meredith, NY 13757

Wed - Sun 10 - 5 pm

May 15 to Oct 15

Innovation, ingenuity, & entrepreneurship at a historic working mill site in the northwestern Catskills, featuring water-powered machines operating as they did a century ago.

Tours at 10:30, 12 noon, 1:30, & 3 pm. (607) 278-5744. <https://www.hanfordmills.org/>

Admission: \$9; \$7 Srs, Educators; \$4.50 Active-Duty Military, Veterans, 1st Responders; Under 12 free.



The Slate Museum

17 Water St, Granville, NY 12832

Tues - Fri 12 – 4 pm; Sat 10 – 4 pm

May 17 – October 18

Slate, Strikes, and Unions

Exploring the History of Labor in the Slate Industry

Since at least the 1840s, the slate industry has operated in the Slate Valley, where thousands of skilled laborers have extracted slate from the Earth. The relationship between workers & quarry owners has been contentious at times, leading to strikes & demands through labor unions when tensions flared. The industry often experiences cycles of prosperity & hardship, greatly impacting the lives of quarry workers & owners. Many workers accepted pay decreases during difficult times, but argued that it was unfair for pay not to increase during prosperous times. mail@slatevalleymuseum.org

Admission: \$5; \$3 Srs.; Under 12, Slate Workers free. (518) 642-1417. www.slatevalleymuseum.org



Adirondack Experience: The Museum on Blue Mountain Lake

9097 State Route 30, Blue Mountain Lake, NY 12812

10 – 5 pm daily

May 23 - October 13

Adirondack Tough: Working in the Wilderness

The story of mining takes visitors exploring Adirondack underground iron mines & today's open-pit mining, which provides the world with valuable minerals for industrial & manufacturing purposes. An interactive activity of breaking up a log jam will allow visitors a first-hand experience of how treacherous a job it was to be an Adirondack lumberjack in the late 19th century.

Admission: \$23.00; \$14.00 Ages 5-17 & Students with Valid ID; **\$20.00** Srs. & Veterans;

Children 4 & under, Active Military **free.** info@theadkx.org (518) 352-7311. www.theadkx.org/visit



NYLHA was founded in 1976 by trade unionists, academics, students, archivists, educators, labor editors, attorneys, & retirees, mostly from New York State. **NYLHA** encourages the study of workers & their organizations and serves as a bridge between past and present labor unionists & academics.

New York Labor History Association

OFFICERS:

President – Irwin Yellowitz / iyellowitz@aol.com

Vice-President – Robert Parmet **Secretary** – Abbe Nosoff **Treasurer** – Peter Filardo

Calendar Committee: Joe Doyle (chair), Martha Foley, Deborah Green, Arieh Lebowitz, Gail Malmgreen, Robert Wechsler, Susan Wilson

Join the NY Labor History Association: <https://newyorklaborhistory.org/join/>

Annual Individual Membership: **\$20**

Annual Contributing Membership: **\$50**